



ROVOS RAIL

JOURNEY
INFORMATION

Lobito - Dar es Salaam



ITINERARIES & MAP
TRAIN SPECIFICATIONS
GENERAL INFORMATION
TERMS & CONDITIONS

The Most Luxurious Train in the World

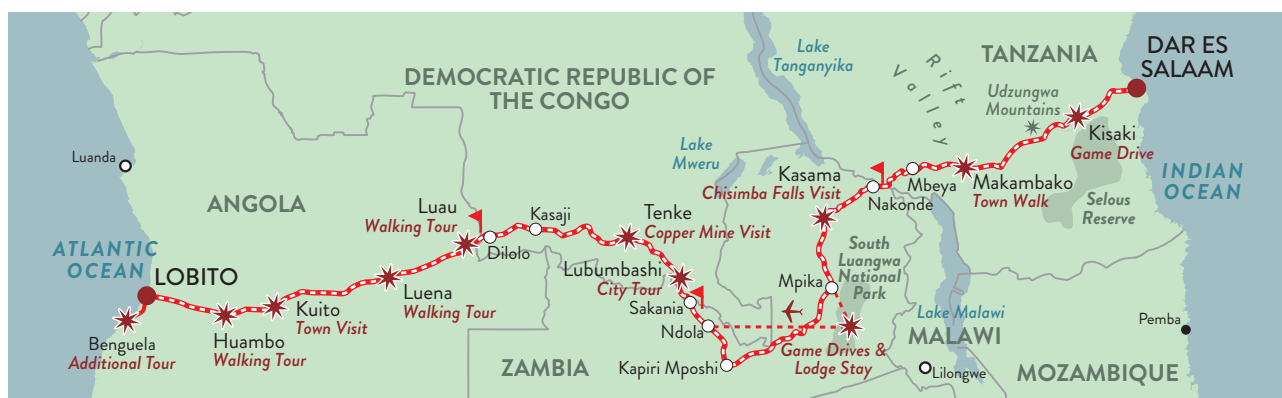


ITINERARY

TRAIL OF TWO OCEANS

Lobito to Dar es Salaam • 15 Days • 4300km

ANGOLA • DRC • ZAMBIA • TANZANIA



	<p>DAY 1 <u>LOBITO</u></p> <p>12:00 The train departs from Lobito. Guests may freshen up in their suites before joining fellow travellers in the lounge car or observation car.</p> <p>13:00 Lunch is served in the dining cars as the train travels through the Benguela province.</p> <p>16:30 Tea is served in the lounge car and observation car. Afternoon lecture in the lounge car.</p> <p>19:30 Dinner is served in the dining cars. The train crosses into the Huambo province. <i>Dress: Formal</i></p>
	<p>DAY 2 <u>HUAMBO</u></p> <p>Lectures during morning and/or afternoon in the lounge car. Please consult Lecture Sheet for details.</p> <p>07:00 Breakfast is served in the dining cars until 09:00.</p> <p>09:00 Enjoy a tour of Huambo, the second largest city in Angola and one of the old kingdoms on the central plateau.</p> <p>12:00 Depart for Boas Agus.</p> <p>13:00 Lunch is served in the dining cars.</p> <p>16:30 Tea is served in the lounge car and observation car.</p> <p>19:30 Dinner is served in the dining cars en route to Kuito. <i>Dress: Formal</i></p>
	<p>DAY 3 <u>KUITO</u></p> <p>Lectures during morning and/or afternoon in the lounge car. Please consult Lecture Sheet for details.</p> <p>07:00 Breakfast is served in the dining cars until 09:00.</p> <p>09:00 Enjoy a stroll through the town of Kuito, built in the historical heart of the Ovimbundu kingdom.</p> <p>11:00 Depart for Savinguila.</p> <p>13:00 Lunch is served in the dining cars.</p> <p>16:30 Tea is served in the lounge car and observation car.</p> <p>19:30 Dinner is served in the dining cars en route to Luena. <i>Dress: Formal</i></p>
	<p>DAY 4 <u>LUENA</u></p> <p>Lectures during morning and/or afternoon in the lounge car. Please consult Lecture Sheet for details.</p> <p>07:00 Breakfast is served in the dining cars until 09:00.</p> <p>09:00 Enjoy a walking tour of Luena to learn more about the recent history of Angola.</p> <p>11:00 Depart and travel towards Cameia.</p> <p>13:00 Lunch is served in the dining cars. The train travels alongside the Cassai River. The catchment of the Cassai River encompasses a vast eco-region of 900 000km² with an incredibly rich fish fauna. As the train passes the villages of Cassai and Cameia, there is sometimes an opportunity to see the local fishermen at work.</p> <p>16:30 Tea is served in the lounge car and observation car.</p> <p>19:30 Dinner is served in the dining cars en route to Luau on the Angola border. <i>Dress: Formal</i></p> <p>Please ensure the Train Manager/Gift Shop has your passport for border formalities.</p> <p>PLEASE PUT YOUR WATCHES FORWARD ONE HOUR BEFORE RETIRING FOR THE EVENING.</p>

	DAY 5 <u>AT LEISURE</u> Lectures during morning and/or afternoon in the lounge car. Please consult Lecture Sheet for details.
07:00	Breakfast is served in the dining cars until 10:00. Border formalities take place in DRC.
13:00	Lunch is served in the dining cars as the train travels towards Malonga.
16:30	Tea is served in the lounge car and observation car.
19:30	Dinner is served in the dining cars. <i>Dress: "African" Theme or Smart Casual</i>
	DAY 6 <u>AT LEISURE</u> Lectures during morning and/or afternoon in the lounge car. Please consult Lecture Sheet for details.
07:00	Breakfast is served in the dining cars until 10:00 as the train travels towards Mungulunga.
13:00	Lunch is served in the dining cars as the train passes Mutshatsha.
16:30	Tea is served in the lounge car and observation car.
19:30	Dinner is served in the dining cars en route to Kolwezi. <i>Dress: Formal</i>
	DAY 7 <u>COPPER MINE</u> Lectures during morning and/or afternoon in the lounge car. Please consult Lecture Sheet for details.
06:00	Breakfast is served in the dining cars until 08:00.
08:00	Disembark at Kolwezi for a visit to a copper mine in an area that holds one of the world's largest known copper and cobalt resources.
10:30	Enjoy brunch at Katebi Lodge (excludes premium drinks).
13:00	Return to the train and depart for Kazembe.
15:30	Tea is served in the lounge car and observation car.
19:30	Dinner is served in the dining cars. <i>Dress: Formal</i>
	DAY 8 <u>LUBUMBASHI</u> Lectures during morning and/or afternoon in the lounge car. Please consult Lecture Sheet for details.
07:00	Breakfast is served in the dining cars until 10:00.
13:00	Lunch is served in the dining cars.
15:00	Enjoy a drive through the city of Lubumbashi.
18:00	Return to the train and depart for Mushoshi.
19:30	Dinner is served in the dining cars en route to Sakania on the DRC border. <i>Dress: Formal</i>
	Please pack a small overnight bag for a two-night stay in South Luangwa National Park. For your convenience we have placed bags in your suite. Please ensure you have warm clothing for the game drives. Time of game drives confirmed on arrival. See inclusions/exclusions.
	DAY 9 <u>SOUTH LUANGWA NATIONAL PARK</u> Lectures during morning and/or afternoon in the lounge car. Please consult Lecture Sheet for details.
07:00	Breakfast is served in the dining cars until 09:30 as the train travels to Ndola. Border formalities take place. Please ensure that you have obtained your passport from the Train Manager/Gift Shop.
10:00	Disembark and transfer to Ndola Airport for a chartered flight to the South Luangwa National Park.
12:00	Transfer to respective camps. Enjoy lunch on arrival followed by check-in.
15:30	Afternoon game drive in the Luangwa Valley.
19:30	Dinner and overnight at the camps. <i>Dress: Casual</i>
	DAY 10 <u>SOUTH LUANGWA NATIONAL PARK</u> Lectures during morning and/or afternoon in the lounge car. Please consult Lecture Sheet for details.
06:00	Wake-up call and continental breakfast.
06:30	Early morning game drive (approximately 3 hours).
10:00	Brunch is served. Afternoon at leisure.
15:30	High tea and game drive (approximately 3 hours).
19:30	Dinner and overnight at the camps. <i>Dress: Casual</i>
	DAY 11 <u>SOUTH LUANGWA NATIONAL PARK</u> Please ensure that your luggage is ready for collection.
	Breakfast, a morning game drive (approximately 2 hours) and check-out times will be confirmed.
	Transfer to the airport for the chartered flight to Mpika, Zambia.

12:00	On arrival, transfer to Mpika Station and rejoin the train.
13:00	Lunch is served in the dining cars. The train travels towards Kabuka.
16:30	Tea is served in the lounge car and observation car.
19:30	Dinner is served in the dining cars en route to Kasama. <i>Dress: Formal</i>
	DAY 12 <u>CHISIMBA FALLS</u> Lectures during morning and/or afternoon in the lounge car. Please consult Lecture Sheet for details.
06:00	Breakfast is served in the dining cars until departure at 08:00.
08:00	Disembark the train at Kasama for a morning excursion to Chisimba Falls.
11:30	Depart for the border.
13:00	Lunch is served in the dining cars.
16:30	Tea is served in the lounge and observation car as the train passes Chozi.
17:40	Arrive at Nakonde for Zambian border formalities. Continue to Tunduma on the Tanzanian border.
19:30	Dinner is served in the dining cars as the train travels to Mbeya and descends the Rift Valley. <i>Dress: Formal</i> Please put your watches forward an hour before retiring for the evening.
	DAY 13 <u>MAKAMBAKO (OPTIONAL)</u> Lectures during morning and/or afternoon in the lounge car. Please consult Lecture Sheet for details.
07:00	Breakfast is served in the dining cars until 10:00.
09:00	Arrive at Makambako and enjoy a stroll through the town (time permitting).
11:00	Depart for Mlimba and the Udzungwa Mountains and negotiate the dramatic switchbacks, viaducts and tunnels towards the Selous Game Reserve.
13:00	Lunch is served in the dining cars.
16:30	Tea is served in the lounge car and observation car.
19:30	Dinner is served in the dining cars en route to Kiberege. <i>Dress: Formal</i>
	DAY 14 <u>SELOUS GAME RESERVE</u> Lectures during morning and/or afternoon in the lounge car. Please consult Lecture Sheet for details.
07:00	Continental breakfast is served in the dining cars until 08:00. The train descends into the highlands and traverses the fertile lands of Tanzania towards Dar es Salaam.
10:30	Brunch is served in the dining cars until 11:45.
12:00	Game visit to the Selous Game Reserve, the largest in Africa at 55 000km ² (time permitting).
18:00	Return to the train.
19:30	Dinner is served in the dining cars en route to Gwata. <i>Dress: "1920s" Theme or Smart Casual</i>
	DAY 15 <u>DAR ES SALAAM</u> Please ensure that you have obtained your passport from the Train Manager/Gift Shop.
05:45	Depart Gwata and travel in an easterly direction towards the coast.
07:00	Breakfast is served in the dining cars until 09:30.
11:00	Arrive at journey's end in Dar es Salaam, Tanzania.

Please dress accordingly for game drives: mornings can be cool then warm up considerably; afternoons can be warm then cool down considerably. Warm clothing, hats and sun protection are advised (season dependent). Rain capes are available.

Excursions may be changed according to schedule achieved. Times are approximate and cannot be guaranteed.
Please check with the Train Manager or reservations@rovos.co.za for any updates or changes to the itinerary.
In your suite you will find the Journeys magazine that features articles of interest related to the route.

We strongly discourage giving any form of handout to children while travelling. This action may have detrimental consequences to local communities. If you would like to give responsibly, we support many local charities and would be happy to assist.

INCLUDES Accommodation; all meals; all alcoholic and other beverages; 24-hour full room service and bar facilities; limited laundry service; guided excursions (where applicable); entrance fees as per itinerary and government tax.

EXCLUDES Pre/post-tour accommodation, flights and transfers; visas; gratuities; international/French Champagne; souvenirs.
INCLUDED in off-train accommodation Meals; standard bar drinks; game activities; laundry; airport-camp transfers; park fees; government tax and levies including Luangwa Conservation & Community Fund and Zambian Carnivore Programme.

EXCLUDED from off-train accommodation Premium wines, Champagne and spirits; telephone calls; unscheduled activities.

MEALS ON BOARD (unless adjusted) Breakfast 07:00-10:00 • Lunch 13:00 • Tea 16:30 • Dinner 19:30.

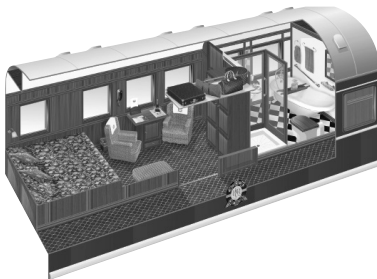


SPECIFICATIONS

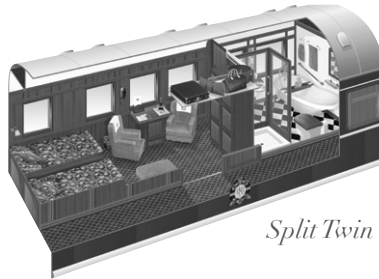
ROYAL SUITES

$\pm 16m^2$
 $\pm 172ft^2$

Bed Dimensions: LxW in CM
Double: 200x189
Split Twin: 200x75



Double Lengthways



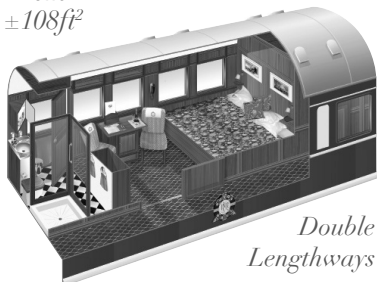
Split Twin

Minibar, air conditioning, writing desk, luggage shelf, cupboards, safe, en-suite bathroom with toilet, bath and shower.

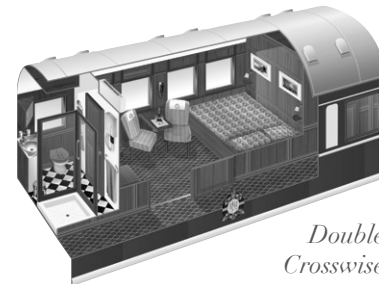
DELUXE SUITES

$\pm 10m^2$
 $\pm 108ft^2$

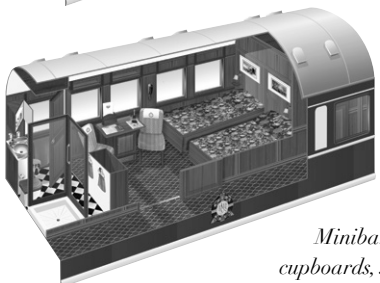
Bed Dimensions: LxW in CM
Double Lengthways: 189x189
Double Crosswise: 189x160
Split Twin: 189x75



Double Lengthways



Double Crosswise



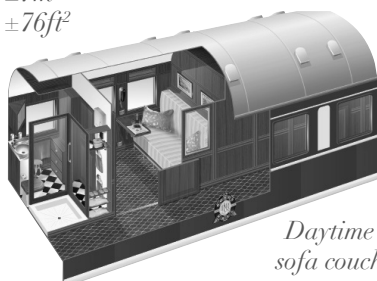
Split Twin

Minibar, air conditioning, writing desk, luggage shelf, cupboards, safe, en-suite bathroom with toilet and shower.

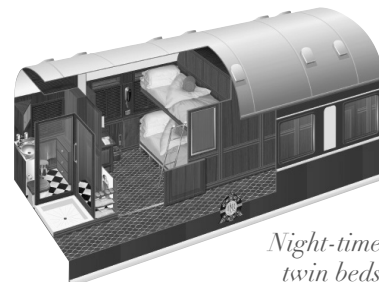
PULLMAN SUITES

$\pm 7m^2$
 $\pm 76ft^2$

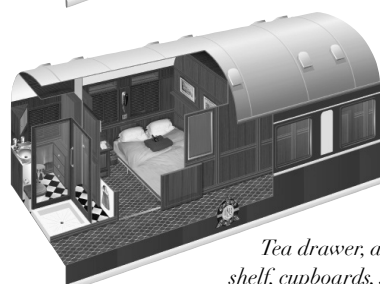
Bed Dimensions: LxW in CM
Double: 189x150
Side-by-side Twin: 189x75
Single lower: 189x94
Single upper: 189x60



Daytime sofa couch



Night-time twin beds



Night-time double bed or side-by-side twin

Tea drawer, air conditioning, fold-out writing desk, luggage shelf, cupboards, safe, en-suite bathroom with toilet and shower.

THE SUITES & COACHES

Each train has accommodation carriages, dining cars, a lounge car (± 26 seats), small gift shop, smoking lounge (± 11 seats) and observation car (± 32 seats) with open-air balcony. The three types of suites are elegant and spacious offering passengers privacy, comfort and luxury with double or twin beds and fittings and facilities that are of the highest standard. All have en-suites with shower, toilet, basin and bath (Royal only), tea facilities, safes, air conditioning, linen and amenities and are serviced daily. There is adequate storage and small cupboards with hangers and shelves.

Suite layouts may differ from images.

ROYAL SUITES



DELUXE SUITES



PULLMAN SUITES



PILLARED DINING CAR



BANQUETTE DINING CAR



OBSERVATION CAR



LOUNGE CAR



CLUB LOUNGE & DELUXE CAR



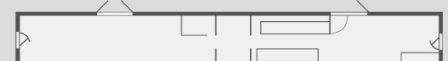
STAFF CAR



KITCHEN CAR



GENERATOR CAR





GENERAL INFORMATION

BOOKING: Upon written request via email/fax and subject to availability, we will **PROVISIONALLY** book your place on the chosen tour. Space is allocated and held BUT if another client requires definite suites, the holding agent/guest will be asked to confirm with a deposit payment or release the suite. Upon written confirmation via email/fax and a completed Reservation Form, final confirmation details and an invoice will be sent. Upon receipt of the relevant payment the booking will be **CONFIRMED**. Conditions apply. See T&C.

CANCELLATION: Cancellation of a confirmed booking received prior to departure is subject to a fee of the per person tour price. See T&C. Cancellation insurance is compulsory as these fees will not be waived. We offer insurance to South African residents. For international guests we suggest you contact your local insurance agent for assistance. Please bring a copy of your travel insurance policy stating clearly the company, policy number and 24-hour medical emergency telephone number.

SCHEDULING TIMES, ROUTES AND EXCURSIONS: We cannot be held liable for any delays due to trains not running to schedule. Off-train excursions cannot be guaranteed and will only be undertaken if time and circumstances permit. Departure and arrival times are approximate and cannot be guaranteed. We reserve the right to alter our routing at any time between departure and arrival points. We caution against same-day air travel on departure/arrival days due to possible delays with flights or the train. We do our best to fulfil our obligations but it goes without saying that with many loco changes as well as other logistical permutations it is not uncommon to be delayed. **It is very important we have your arrival and departure details.** Should you be delayed, kindly contact +27 (0) 12 315 8242.

ADDRESSES	JOURNEY	CHECK-IN	DEPART	ARRIVE
PRETORIA: Rovos Rail Station, 1 Transnet Ave, Capital Park, Pretoria, South Africa	Pretoria-Cape Town	14:00	15:00	18:00 (Plat.24)
	Cape Town-Pretoria	10:00	11:00	12:00
CAPE TOWN: Rovos Rail Lounge, 1 Adderley St, Paul Sauer Building, Cape Town, South Africa	Pretoria-Durban	09:00	10:00	16:00 (Plat.14)
	Durban-Pretoria	09:00 (Lounge)	10:00 (Plat.14)	16:00
DURBAN: Durban Station Lounge, Jelf Taylor Crescent, Stamford Hill, Durban, South Africa	Pretoria-Victoria Falls	09:00	10:00	10:00
	Victoria Falls-Pretoria	16:00 (Hotel)	17:00	10:00
VICTORIA FALLS: Victoria Falls Hotel/Station, Mallet Drive, Victoria Falls, Zimbabwe	Pretoria-Walvis Bay	14:00	15:00	12:00
	Walvis Bay-Pretoria	11:00	12:00	12:00
WALVIS BAY: Walvis Bay Station, Corner 6 th Street and 11 th Road, Walvis Bay, Namibia	GOLF SAFARI Pretoria-Pretoria	11:00	12:00	10:00
	COLLAGE Pretoria-Cape Town	09:00	10:00	17:00
DAR ES SALAAM: Tazara Station, Julius K. Nyerere Road, Dar es Salaam, Tanzania CHECK-IN: Serena Hotel, Ohio St, Dar.	COLLAGE Cape Town-Pretoria	08:30	09:30	17:00
	DAR Cape Town-Dar es Salaam	10:00	11:00	10:00
LOBITO: Central Station, Av. Craveiro Lopes, Lobito, Angola	DAR Dar es Salaam-Cape Town	09:30 (Hotel)	12:00	18:00
	ANGOLA Dar es Salaam-Lobito	11:00	12:00	10:00
	ANGOLA Lobito-Dar es Salaam	11:00	12:00	10:00

MEDICAL:

- **All guests are solely responsible for ensuring they are capable of undertaking the tours and activities.**
- Please inform us at the time of your reservation if you have any medical conditions, physical disabilities or allergies.
- There is a basic First Aid Kit on board.
- We have a doctor on board on the Dar es Salaam and Angola trips.
- Anti-malarial precautions are recommended. Malaria areas: Swaziland, Kruger Park, Northern Botswana, Zimbabwe, Zambia, Etosha, Tanzania, DRC and Angola.
- Recommended immunisations (not required): Hepatitis A + B, Polio, Tetanus, Cholera (low risk).
- A Yellow Fever/Medical Exemption Certificate is **essential** if travelling to/from **Tanzania, DRC and Angola**. Although all countries travelled through don't require this, countries guests return to **after** the trip often require them.
- Please consult your clinic or doctor. TRAVEL DOCTOR AFRICA *local* 0861 300 911 or *international* +27 (0) 11 214 9030.

PASSPORTS AND VISAS: The onus is upon the client to ensure that passports and visas, as may be required, are valid prior to departure for Africa. On the various journeys we travel through: South Africa, Swaziland, Namibia, Zimbabwe, Botswana, Zambia, Tanzania, Democratic Republic of Congo (DRC) and Angola. Some nationalities are eligible to purchase port-of-entry visas. Immigration forms will be available on board. Please ensure you have a minimum of US\$200 in cash with you. Angolan and DRC visas must be obtained prior to travel. We request guests obtain their Tanzanian visa prior to travel when possible. Passports must have at least **five blank VISA pages** and must be valid for at least **six months** from your return-home date. **Please enquire with us or check with the relevant embassies in good time regarding applications.** Visas are also available through visa and booking agents.

AMENITIES: Rovos Rail provides a complete amenity bag with the following South African products: soap (25g), tissues, shampoo (30ml), conditioner (30ml), bath and shower gel (30ml), hand and body lotion (30ml), lip balm (4.8g), sun cream SPF50 (8ml), insect repellent gel (8ml), cotton-wool pads, ear buds, a shoe mit, nail file, small sewing kit and a shower cap. Plug-in hairdryers – in addition to your bathroom unit (if applicable) – are available on board.

CHILDREN: We do accommodate children but we kindly ask parents to be sensitive to the adult nature and atmosphere of the train by keeping them respectful and quiet. Long journeys are not recommended for under 13s. Children between 0-2 years old are not permitted to travel. There are no child-minding facilities or activities available for children on board. See Child Policy.

CURRENCY:

- South Africa – Rands only. We accept all major credit cards on the train.
- Outside of South Africa – Rands are accepted in Namibia and Swaziland. US Dollars are accepted in Zimbabwe, Tanzania (Dar es Salaam only), DRC and Angola. Cash is highly recommended. Hotels and major dealers accept credit cards.
- US Dollars printed before year 2009 or that look worn will not be accepted. Low denominations recommended for shopping/gratuities. Larger denominations recommended for exchanging money to local currency (especially in Tanzania) as you get a better rate.

DIETARY REQUIREMENTS: We will do our best to cater for dietary requirements provided a detailed request has been made at that time of your reservation. If a special request has not been made, the chefs will endeavour to prepare suitable meals with the ingredients available on board. We regret we are unable to prepare meals requiring strict religious observance in the preparation.

DINING: Meals on board are served in one sitting only in the dining cars and are complemented by a selection of fine South African wines. Breakfast: 07:00-10:00 • Lunch: 13:00 • Tea: 16:30 • Formal Dinner: 19:30. Bar service is from 07:00-±01:00. All meals are served at these times unless otherwise stated in the timetable. A gong heralds lunch and dinner.

DRESS:

- **Days on board are smart casual:** Neat, conventional yet relatively informal in style combining casual and formal clothing pieces.
- **Evening attire is more formal:** For gentlemen a jacket and tie is a minimum requirement while for ladies we suggest cocktail/evening dresses or suits. On **long journeys** we enjoy **theme evenings** where guests can **dress up accordingly** or opt for **smart casual**:
 - **Golf Safari, African Collage, Dar es Salaam and Lobito:** 1 x "AFRICA" evening and 1 x "1920s" evening. See *Journey Info*.
 - **Namibia Safari:** 1 x "AFRICA" evening. See *Journey Info*.
- **Off-train excursions:** We recommend comfortable walking shoes, sun lotion and hats. If required, blankets and rain capes are available.
- **Game drives** are on open vehicles so please dress accordingly: mornings can be cool then warm up considerably; afternoons can be warm then cool down considerably. Please see average temperatures as a guide.

ELECTRICITY: 220V AC 50Hz 3-point round-pronged wall plugs and 110V/220V 2-pin plugs for shavers and chargers. International adaptors available. A generator supplies power. Please be aware that certain breaks in power are necessary when servicing is required.

GIFT SHOP/ADMINISTRATION: There is a small gift shop on the train and at Rovos Rail Station. Due to the varying exchange rates, credit cards are preferred. The host/ess on duty has a basic First Aid Kit and personal essentials (toothbrushes, razors, earplugs etc.). He/she will also fulfil any administrative requirements and check your onward arrangements. If the map supplied is not comprehensive enough you may purchase a more detailed map from the Gift Shop.

GRATUITIES: Gratuities for the staff are at your discretion. If you wish to show your appreciation in this manner, there will be a marked envelope in your suite that you can hand directly to the Train Manager who will distribute any amounts on a pro-rata basis (share) among the staff on board. An amount between ZAR100-200 (±US\$10-20) per person per night is suggested, depending on the length of your journey.

LAUNDRY: There is a limited laundry service on board comprising household washers, dryers and steam irons. The turnaround is 48 hours so we are not able to handle a week's worth of laundry. There are no dry-cleaning facilities en route or on board. Please note that while we are providing a complimentary service we cannot be held responsible for items that may be damaged or lost in the process.

LOCOMOTION: Use of steam has become increasingly difficult over the years as more and more water and coaling facilities have been scrapped. Diesel or electric locomotives are used while steam is used in and around the area of Rovos Rail Station only.

LUGGAGE: Each suite has a luggage rack that runs its length providing ample space for storage. On selected long journeys, guests are provided with a Rovos Rail tog bag that can be used for overnight trips or hand luggage on aircraft.

MAGAZINES, MAPS AND GAMES: There are board games, cards, a card table (dependent), books and magazines available for your use in the lounge and observation cars while on board. In your suite is a map, itinerary and the *Journeys* magazine featuring articles of interest related to your route. If the map supplied is not comprehensive enough you may purchase a more detailed map from the Gift Shop.

MOBILE DEVICES AND INTERNET: In maintaining the spirit of train travel there are no radios or television sets on board. The use of mobile phones, laptops and essentially anything that has the ability to disturb other passengers is confined to the privacy of your suites only. The reception is poor while the train is moving. It is advised to contact your service provider to ensure the correct settings for network services are activated. WiFi is available at our lounges in Cape Town and Pretoria and at most off-train accommodation (although not always guaranteed).

POSTAGE: Stamps are available for sale from the Gift Shop. Postcards may be handed to the Administration host/ess for posting.

SECURITY: An electronic safe is provided in the cupboard in each suite.

SMOKING: On board the train smoking is allowed in the smoking Club Lounge only. **HOWEVER**, please be mindful of other non-smoking guests, that the train is generally made up of wood and **DO NOT** throw flammable items such as cigarette or cigar butts off the train. Bush fires in Africa are a constant and dangerous hazard. Please note at the time of your reservation if you are smoking or non-smoking so that the appropriate room might be requested at the hotels.

SPECIAL OCCASIONS: Please note at the time of your reservation if you are celebrating an occasion as we'd like to share it with you.

TEMPERATURE AND TIME ZONES: All public cars are fitted with gas-filled air-conditioning systems. Each suite has an individual air conditioner with temperature controls that can also be set to heat mode. Windows should be closed while operating the air-conditioning unit. Electric under-blankets are fitted on the bed. See guide...

AVERAGE TEMPS °C	JAN/FEB		MAR/APR		MAY/JUN		JUL/AUG		SEP/OCT		NOV/DEC		Rainfall Months	TIME ZONE
AREA	Min	Max	Min	Max	Min	Max	Min	Max	Min	Max	Min	Max		
Cape Town, SA	16	28	13	26	9	21	7	19	9	22	13	27	Apr-Aug	GMT+2
Pretoria, SA	18	30	15	27	7	23	4	22	13	28	16	30	Oct-Mar	GMT+2
Durban, SA	21	29	19	28	12	25	16	25	16	26	19	28	Oct-Mar	GMT+2
Port Elizabeth, SA	17	23	15	21	12	20	11	18	12	18	15	21	May-Aug	GMT+2
Mbabane, Swaziland	16	28	13	27	5	23	5	23	10	26	14	28	Nov-Feb	GMT+2
Gaborone, Botswana	19	33	14	30	7	25	5	25	14	31	18	33	Dec-Mar	GMT+2
Vic Falls, Zimbabwe	15	29	14	29	8	23	7	27	16	28	16	26	Dec-Mar	GMT+2
Lusaka, Zambia	17	25	15	22	11	17	8	16	17	24	17	25	Dec-Mar	GMT+2
South Luangwa, Zambia	20	31	19	31	12	30	11	20	17	35	20	34	Nov-Mar	GMT+2
DAR, Tanzania	18	28	18	25	19	25	18	23	16	24	18	28	Mar-May	GMT+3
Walvis Bay, Namibia	16	22	15	22	11	22	10	20	11	18	13	20	March	GMT+2
Etosha Pan, Namibia	18	31	17	30	10	27	10	27	15	32	18	33	Jan-Mar	GMT+2
Lobito, Angola	28	32	29	34	25	33	20	28	22	25	26	30	Mar-Apr	GMT+1

THE TRACK: The track over which we travel is inconsistently maintained. If you wake at night imagining the train is travelling at high speed, be assured it is the state of the track below creating that impression. We restrict the train to 60km/h (37mph) and over bad sections reduce speed to as little as 20km/h (12mph). If you find it noisy, earplugs are available at the Gift Shop.

WATER: The water used on the train is carried in tanks under each coach. These tanks are filled every day but they cannot be topped up while the train is travelling. Please assist us by using water responsibly. Water inside the cabins has been filtered and chlorinated; it is safe for bathing and brushing teeth only. Please use the bottled water provided for drinking.

~Journeys Combined

If you have an overnight stop in Pretoria between journeys you may leave most of your luggage at Rovos Rail Station under lock and key if you wish but this will be at your own risk.



TERMS & CONDITIONS

PROVISIONAL BOOKING Upon written request via email/fax and subject to availability, we will provisionally book your place on the chosen tour. Space is allocated and held BUT if another client requires definite suites, the holding agent/guest will be asked to confirm with a deposit payment or release the suite. Conditions apply.

CONFIRMED BOOKING Upon written confirmation via email/fax and a completed Reservation Form, final confirmation details and an invoice will be sent. Upon receipt of the relevant payment the booking will be confirmed (see below).

CANCELLATION Cancellation of a confirmed booking received prior to departure is subject to a fee of the per person tour price (see below). Cancellation insurance is compulsory as these fees will not be waived.

INDIVIDUALS: PAYMENT SCHEDULE				
TO CONFIRM A BOOKING A DEPOSIT PAYMENT OF THE PER PERSON TOUR PRICE IS REQUIRED BEFORE THE DEPARTURE DATE	61+ DAYS ±2 months	60 DAYS ±2 months	<i>A provisional booking will be held for 14 days after which a 25% deposit is due. Final payment is due 60 days prior to travel.</i>	
Cape Town, Victoria Falls, Durban	25%	100%		
Golf Safari, African Collage, Namibia, Dar es Salaam, Lobito	25%	100%		
INDIVIDUALS: CANCELLATION POLICY				
CANCELLATION OF A CONFIRMED BOOKING RECEIVED PRIOR TO DEPARTURE IS SUBJECT TO A FEE OF THE PER PERSON TOUR PRICE	91+ DAYS ±3 months	90-61 DAYS ±3 months	60-31 DAYS ±2 months	30-0 DAYS ±1 month
Cape Town, Victoria Falls, Durban			25%	100%
Golf Safari, African Collage, Namibia, Dar es Salaam, Lobito	10%	25%	50%	100%

GROUPS of 10 or more guests: PAYMENT SCHEDULE AND CANCELLATION POLICY					
TO CONFIRM A BOOKING A NON-REFUNDABLE PAYMENT OF THE PER PERSON TOUR PRICE IS REQUIRED BEFORE DEPARTURE	365-246 DAYS ±12 months	245-181 DAYS ±8 months	180-121 DAYS ±6 months	120-61 DAYS ±4 months	60 DAYS ±2 months
Cape Town, Victoria Falls, Durban			10%	20%	100%
Golf Safari, African Collage, Namibia, Dar es Salaam, Lobito	10%	30%		50%	100%
<ul style="list-style-type: none">For every 15 paying passengers, the 16th person sharing travels free of charge, confirmed at final invoice 60 days before departure.275 days before departure: the agent/group must provide an allocation sales update and release 20% of the unsold space (if a waitlist persists).245 days before departure: the agent/group must release a further 50% of the unsold space (if a waitlist persists).180 days before departure: the agent/group must release 100% of the unsold space.					

CHANGES Rovos Rail reserves the right to amend the tour price at any time prior to written confirmation of the reservation. Rovos Rail further reserves the right to cancel or amend any sightseeing excursions or the tour departure dates provided they can offer the passenger alternative sightseeing excursions or departure dates. Rovos Rail is not responsible for any delay or changes in tour arrangements that may be caused by natural or other factors beyond the control of Rovos Rail. There will be no refunds for any part of the tour that might be missed due to personal reasons.

MAXIMUM TRAIN CAPACITY 36 suites/72 guests. We reserve the right to alter this capacity as circumstances require.

MEDICAL Guests are solely responsible for ensuring they are capable of undertaking the tours. Anti-malarial and Yellow Fever precautions may be required in countries being visited. A Yellow Fever or Medical Exemption Certificate is essential if travelling to/from Tanzania, DRC and Angola. Although all countries travelled through don't require this, countries guests return to after the trip often require them.

PASSPORTS & VISAS Guests are solely responsible for ensuring passports and visas, as may be required, are valid prior to departure for Africa. Visas available through visa and booking agents. Please check with relevant embassies for requirements.

PHOTOGRAPHY Rovos Rail reserves the right without notice to make use of any photography/film taken by our staff on the tour for general publicity purposes without payment or permission.

OF SPECIAL NOTE Although certain limited insurances have been arranged, neither Rovos Rail Tours (Pty) Ltd, nor its servants, agents or employees, shall be liable for any loss or damage to passengers' luggage or effects. Insofar as one of the tours may include a visit to a game reserve and whilst attacks by wild animals are extremely rare, similarly neither Rovos Rail, nor its servants, agents or employees, accept any liability whatsoever for any injury or incidents to passengers or their belongings. The passenger hereby waives any claim which he/she may have against Rovos Rail Tours (Pty) Ltd, its servants, agents, employees or subcontractors (all of the aforementioned being collectively referred to as 'Rovos Rail') for any injury and/or loss of any nature whatsoever (including, without limiting the generality of the foregoing, consequential loss) arising for any reason of any nature whatever directly or indirectly out of any aspect of the tour including, without limiting the generality of the foregoing, any form of transport used for the purpose of the tour. This waiver shall be binding on the passenger's executors, heirs, trustees and dependants. The passenger records that all the services and facilities provided to the passenger are accepted voluntarily and with full knowledge that they may expose the passenger to injury, danger or loss. The passenger further records that any statement, representation or information given to him/her by Rovos Rail shall, unless given in writing, not prejudice this waiver in any manner whatsoever. The passenger indemnifies Rovos Rail in respect of any claim that may be made by any third party against it arising out of any claim in respect of which the passenger gives the aforementioned waiver. This agreement shall be governed solely by laws of the Republic of South Africa.

WHETHER THE PASSENGER RETURNS A SIGNED COPY OF THESE CONDITIONS OR NOT, THE CONDITIONS WILL BE DEEMED TO HAVE BEEN ACCEPTED AND WILL BE IN FORCE UPON CONFIRMATION OF THE BOOKING.

I, or the person/s on whose behalf I am making this booking, have read and accepted the conditions above.

Date of Trip:	Route:	Signature:
Name:		